

S10-R2

RM: 1.0
CHU: 2800



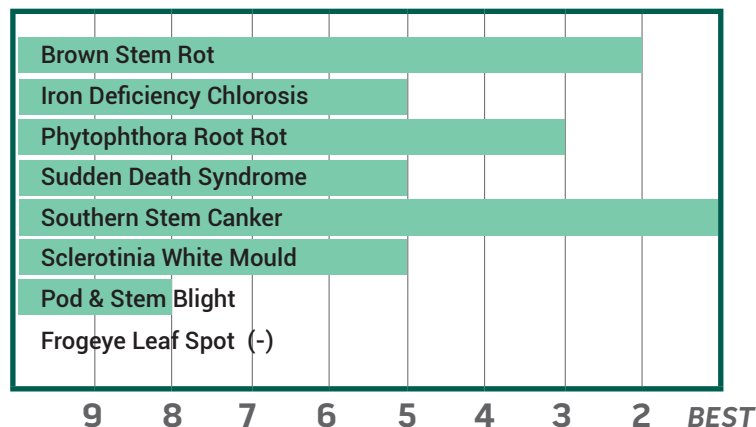
High-Yielding Stress-Tolerant Soybean with Great Food-Grade Qualities

- Tall, bushy plant type that canopies quickly
- Excellent yields on tough acres
- Great root disease package for early-season start

PLANT CHARACTERISTICS

PLANT HEIGHT	Medium-Tall
CANOPY/PLANT TYPE	6.60
BRANCHING	Moderate
GROWTH HABIT	Indeterminate
FLOWER COLOUR	Purple
PUBESCENCE COLOUR	Gray
POD COLOUR	Tan
HILUM COLOUR	Yellow

DISEASE RATINGS



AGRONOMIC TRAITS

EMERGENCE	3
STANDABILITY	5
SHATTER TOLERANCE	-
GREEN STEM	1
ESTIMATED SEED SIZE	Large
PROTEIN	Ultra High
OIL	Average
NARROW ROWS	Poor
WIDE ROWS	Best

ADAPTATION TO SOIL TYPES

DROUGHT PRONE	Best
HIGHLY PRODUCTIVE	Good
MODERATE/VARIABLE ENVIRONMENTS	Best
POORLY DRAINED	Best

DISEASES AND PESTS

PHYTOPHTHORA ROOT ROT (PRR) SOURCE	NA
SOYBEAN CYST NEMATODE (SCN) RACES (SCN) SOURCE	R3 PI88788
ROOT KNOT NEMATODE (RKN) INCOGNITA	-

1-9 Scale: 1 = Best, 9 = Worst, (-) = Not Available

Adaptation and Responses: Best > Good > Fair > Poor

Protein and Oil: Ultra High > Very High > High > Average > Low

Canopy Index: Reflects plant height, width and branching. 1 = Smallest, 9 = Largest

Performance evaluations are based on field observations and public information. Data from multiple locations and years should be consulted whenever possible. Individual results may vary depending on local growing, soil and weather conditions.



Phone: 519-683-4413
Toll Free: 1-800-472-9906
jacksonseedservice.com