

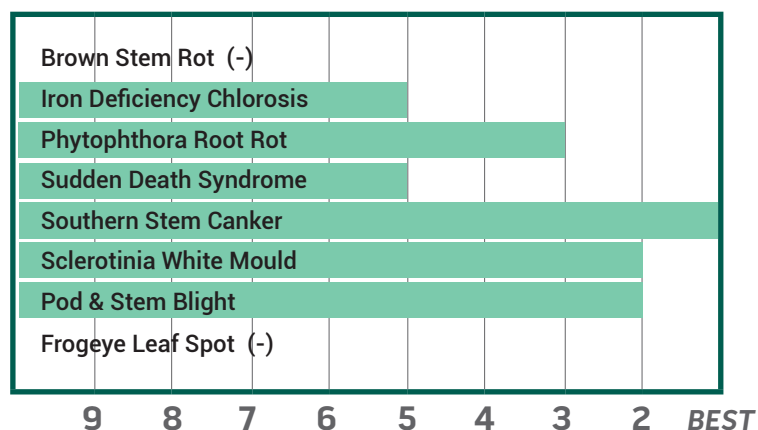
Improved Yield with Excellent Food-Grade Qualities

- Tall plant type with very good standability
- Rps1c with above-average Phytophthora Root Rot field rating
- Excellent Soybean White Mould tolerance

PLANT CHARACTERISTICS

PLANT HEIGHT	Medium
CANOPY/PLANT TYPE	-
BRANCHING	-
GROWTH HABIT	Indeterminate
FLOWER COLOUR	Purple
PUBESCENCE COLOUR	Light Tawny
POD COLOUR	Tan
HILUM COLOUR	Yellow

DISEASE RATINGS



AGRONOMIC TRAITS

EMERGENCE	3
STANDABILITY	1
SHATTER TOLERANCE	2
GREEN STEM	1
ESTIMATED SEED SIZE	Very Large
PROTEIN	Very High
OIL	Average
NARROW ROWS	Best
WIDE ROWS	Fair

ADAPTATION TO SOIL TYPES

DROUGHT PRONE	Good
HIGHLY PRODUCTIVE	Best
MODERATE/VARIABLE ENVIRONMENTS	Good
POORLY DRAINED	Good

DISEASES AND PESTS

PHYTOPHTHORA ROOT ROT (PRR) SOURCE	Rps1c
SOYBEAN CYST NEMATODE (SCN) RACES (SCN) SOURCE	S
ROOT KNOT NEMATODE (RKN) INCOGNITA	-

1-9 Scale: 1 = Best, 9 = Worst, (-) = Not Available

Adaptation and Responses: Best > Good > Fair > Poor

Protein and Oil: Ultra High > Very High > High > Average > Low

Canopy Index: Reflects plant height, width and branching. 1 = Smallest, 9 = Largest

Performance evaluations are based on field observations and public information. Data from multiple locations and years should be consulted whenever possible. Individual results may vary depending on local growing, soil and weather conditions.