

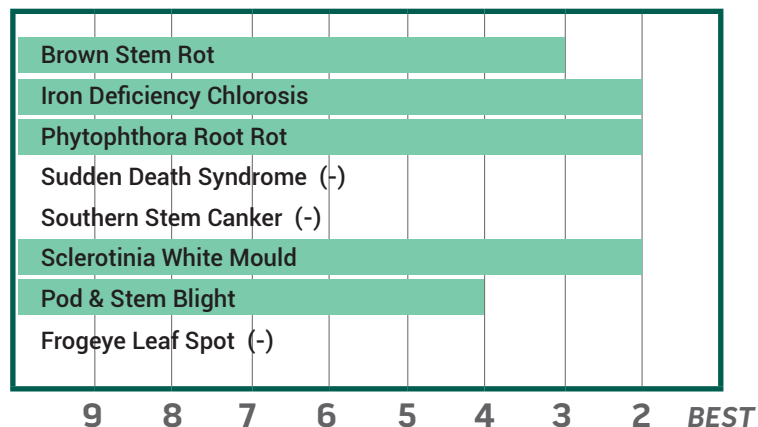
Proven Genetics with a History of Excellent Performance

- Three days earlier than S03-W4
- Rps1c/3a gene stack with strong Phytophthora field tolerance
- Best suited for narrower rows

PLANT CHARACTERISTICS

PLANT HEIGHT	Medium
CANOPY/PLANT TYPE	3.63
BRANCHING	Light
GROWTH HABIT	Indeterminate
FLOWER COLOUR	Purple
PUBESCENCE COLOUR	Tawny
POD COLOUR	Brown
HILUM COLOUR	Imperfect Yellow

DISEASE RATINGS



AGRONOMIC TRAITS

EMERGENCE	3
STANDABILITY	2
SHATTER TOLERANCE	-
GREEN STEM	-
ESTIMATED SEED SIZE	Large
PROTEIN	High
OIL	High
NARROW ROWS	Best
WIDE ROWS	Good

ADAPTATION TO SOIL TYPES

DROUGHT PRONE	Best
HIGHLY PRODUCTIVE	Good
MODERATE/VARIABLE ENVIRONMENTS	Best
POORLY DRAINED	Best

DISEASES AND PESTS

PHYTOPHTHORA ROOT ROT (PRR) SOURCE	Rps1c, Rps3a
SOYBEAN CYST NEMATODE (SCN) RACES (SCN) SOURCE	R3 PI88788
ROOT KNOT NEMATODE (RKN) INCOGNITA	-

1-9 Scale: 1 = Best, 9 = Worst, (-) = Not Available

Adaptation and Responses: Best > Good > Fair > Poor

Protein and Oil: Ultra High > Very High > High > Average > Low

Canopy Index: Reflects plant height, width and branching. 1 = Smallest, 9 = Largest

Performance evaluations are based on field observations and public information. Data from multiple locations and years should be consulted whenever possible. Individual results may vary depending on local growing, soil and weather conditions.